

A B I R K H Ä U S E R P U B L I C A T I O N

C O M P U T E R A L G E B R A

MapleTech

• F U N C T I O N A L I T Y

• A P P L I C A T I O N S

• E D U C A T I O N

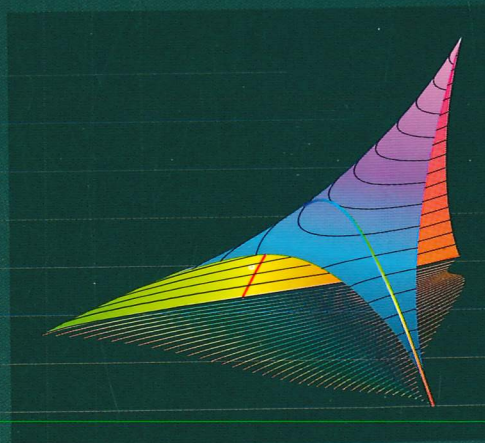
WINTER ISSUE

Featuring:

- Maple and the World Wide Web
- Berkowitz Algorithm
- Multi-Variable Optimal Control
- Population Dynamics
- Fourier Optics

VOL. 4, NO. 3, 1997

\$14.95



Aim and Scope

A publication for the communication of applications among creators and users of Maple software in all areas of mathematics, engineering, and science.

Subscription Information

Beginning in 1997 MapleTech is published three times per annum starting with Volume 4, numbers 1, 2, and 3. Annual institutional subscription rate (1998): US \$75.00 plus \$6.00 postage and handling charges. Individual subscription rate: US \$45.00 plus \$6.00 postage and handling. These prices are valid in North America only. (Canadian customers please add 7% GST. Birkhäuser's GST registration number is 123394918.) Outside North America: Please place your order with your bookdealer or send directly to Birkhäuser Verlag, Journal Subscription Department, P.O. Box 133, CH-4010 Basel, Switzerland. Telephone: ++ 41 61 205 0707; Fax: ++ 41 61 205 0792; Telex: 963475 birk ch, e-mail: order@birkhauser.ch. All orders must be accompanied by payment, and if originating from the USA and Canada should be sent to:

Birkhäuser

Subscription Dept.
675 Massachusetts Ave.
Cambridge, MA 02139
Toll Free 1-800-777-4643
Fax (201) 348-4505
Email: orders@birkhauser.com



Change of Address

Allow six to eight weeks for all changes to become effective. All communications should include both the old and new address (with Postal Codes) and should be accompanied by a mailing label from a recent issue.

Advertisements

Correspondence concerning advertisements should be sent to:
Advertising Director
c/o Springer-Verlag, Inc.
175 Fifth Ave.
New York, NY 10010, USA
Telephone: (212) 460-1700

Office of Publication

Birkhäuser Boston
675 Massachusetts Ave.
Cambridge, MA 02139
Telephone: (617) 876-2333
email: mapletech@birkhauser.com
http://www.birkhauser.com

Copyright

All articles published in this journal are protected by copyright, which covers the exclusive rights to reproduce and distribute the article (e.g. as offprints), as well as all translation rights. No material published in this journal may be reproduced photographically or stored on microfilm, in an electronic database, video discs, etc. without first obtaining written permission from the editors. The use of general descriptive names, trade names, trademarks, etc. in this publication, even if not specifically identified, does not imply that these names are not protected by the relevant laws and regulations.

While the information in this journal is believed to be true and accurate at the date of going to press, neither the authors, the editors, the Committee, nor the publisher can accept any legal responsibility for any errors or omissions that may be made. The publisher makes no warranty, express or implied, with respect to the material contained herein.

Photocopies may be made for personal or in-house use beyond the limitations stipulated under section 107 or 108 of US Copyright Law, provided a fee is paid. The fee is \$6.00 for each copy, regardless of the number of pages in the article. All fees should be paid to the Copyright Clearance Center, Inc., 222 Rosewood Drive, Danvers, MA 01923, USA, stating the ISSN, the issue, and the first and last page of each article copied. The copyright owner's consent does not include copying for general distribution, promotion, new works, or resale. In these cases, specific written permission must first be obtained from the publisher.

EDITORS

Editor in Chief: Dr. Tony Scott
INRIA-Rocquencourt
B.P. 105
78153 Le Chesnay Cedex, France
Phone: (+33) 01 39 63 51 01/Fax: (+33) 01 39 63 57 86
email: Tony.Scott@inria.fr

Editor: Michael B. Monagan
Department of Mathematics & Statistics
Simon Fraser University
Burnaby, B.C. V5A 1G1 Canada
email: monagan@cecm.sfu.ca

Assistant Editor: Judi Borwein
7324 Braeside Drive
Burnaby, B.C. V5A 1G1 Canada
email: Jdborwein@cecm.sfu.ca

SECTION EDITORS

Functionality

M. Monagan, Simon Fraser University

Applications

W. C. Bauldry, Appalachian State University
D. Harper, Royal Greenwich Observatory
A.B. Ogunye, Air Products and Chemicals, Inc.

Education

R. Lopez, Rose-Hulman Institute of Technology
R. Israel, University of British Columbia

World Wide Web

Reid M. Pinchback, Massachusetts Institute of Technology

News and Reviews

Blaire Madore, University of Toronto

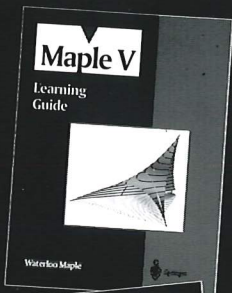
EDITORIAL BOARD

W.C. Bauldry, Appalachian State University
M. Bronstein, ETH, Zurich
B. Buchberger, RISC
J. Carette, INRIA, Rocquencourt
Tom Casselman, Lockheed
R.M. Corless, University of Western Ontario
R. Fateman, University of California, Berkeley
G. Fee, Simon Fraser University
P. Flajolet, INRIA, Rocquencourt
A. Heck, CAN Expertise Center, Amsterdam
W. Koepf, Korad-Zuse-Zentrum, Berlin
R.J. Lopez, Rose-Hulman Institute of Technology
K.-H. Low, Nanyang Technological University
B. Madore, University of Toronto
D.B. Meade, University of South Carolina
M.B. Monagan, Simon Fraser University
A.B. Ogunye, Air Products and Chemicals, Inc.
R.L. Peskin, Rutgers University
K. Roach, University of Waterloo
M. Rybowicz, University of Limoges
B. Salvy, INRIA, Rocquencourt
V. Strehl, University of Erlangen-Nurnberg

Waterloo Maple

ADVANCING MATHEMATICS
Published with the support of
Waterloo Maple, Inc.
450 Phillip St.
Waterloo, Ontario, Canada
N2L 5JL
Phone: (519) 747-2373
FAX: (519) 747-5284
email: info@maplesoft.com

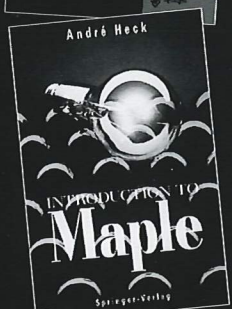
Maximize the Potential of Maple V!



WATERLOO MAPLE INC.

Maple V Learning Guide

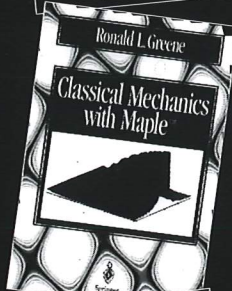
1996/269 PP., 74 ILLUS./SOFTCOVER/\$24.00
ISBN 0-387-94536-9



WATERLOO MAPLE INC.

Maple V Programming Guide

1996/379 PP./SOFTCOVER/\$34.00
ISBN 0-387-94537-7

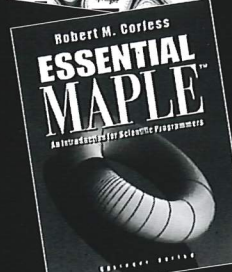


DARREN REDFERN, Practical Approach Corp.,
Ontario, Canada

The Maple Handbook

Maple V Release 4

1996/531 PP./SOFTCOVER/\$29.00
ISBN 0-387-94538-5

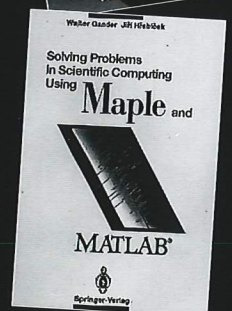


Second Edition

ANDRÉ HECK, Expertise Center, Computer Algebra
Netherlands, The Netherlands

Introduction to Maple

1996/APP. 699 PP., 120 ILLUS./HARDCOVER/\$44.95 (T.)
ISBN 0-387-94535-0



DARREN REDFERN, Practical Approach Corp.,
Ontario, Canada and **EDGAR CHANDLER**, Paradise
Valley Community College

Maple ODE Lab Book

1996/APP. 150 PP./SOFTCOVER/\$29.95 (T.)/ISBN 0-387-94733-7

RONALD L. GREENE, University of New Orleans, LA

Classical Mechanics with Maple

1995/173 PP., 56 ILLUS./SOFTCOVER/\$29.00/ISBN 0-387-94512-1

Second Expanded Edition

WALTER GANDER, ETH Zürich, Switzerland and
JÍŘÍ HŘEBÍČEK, University of Agriculture and Forestry,
Brno, Czech Republic (Eds.)

Solving Problems in Scientific Computing using Maple and MATLAB™

1995/315 PP., 106 ILLUS./SOFTCOVER/\$39.95
ISBN 3-540-58746-2

ROBERT M. CORLESS, University of Western Ontario,
Canada

Essential Maple

An Introduction for Scientific Programmers

1995/218 PP., 32 ILLUS./SOFTCOVER/\$27.95
ISBN 0-387-94209-2

ROBERT M. CORLESS, University of Western Ontario,
Canada

Symbolic Recipes

Scientific Computing with Maple

1996/APP. 300 PP., 60 ILLUS./HARDCOVER/\$39.00 (T.)
ISBN 0-387-94210-6

Forthcoming...

DARREN REDFERN, Practical Approach Corp.,
Ontario, Canada

The Practical Approach Utilities for Maple

Maple V Release 4

1996/312 PP., 83 ILLUS./3.5" DISKETTE/SOFTCOVER/\$69.00
ISBN 0-387-14225-8



Springer

ORDER TODAY!

- **Call:** 1-800-SPRINGER or Fax Orders to:
(201)-348-4505 (8:30 AM-5:30 PM ET)
- **Write:** Send payment (check or credit card) plus
\$3.00 postage and handling for the first book and
\$1.00 for each additional book to: Springer-Verlag
New York, Inc., Dept. #H216, PO Box 2485,
Secaucus, NJ 07096-2485 (CA, IL, MA, NJ, NY, PA,
TX, VA, and VT residents add sales tax, Canadian
residents add 7% GST)

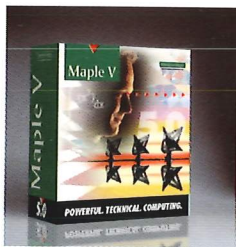
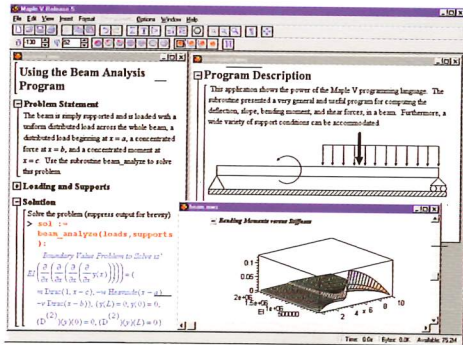
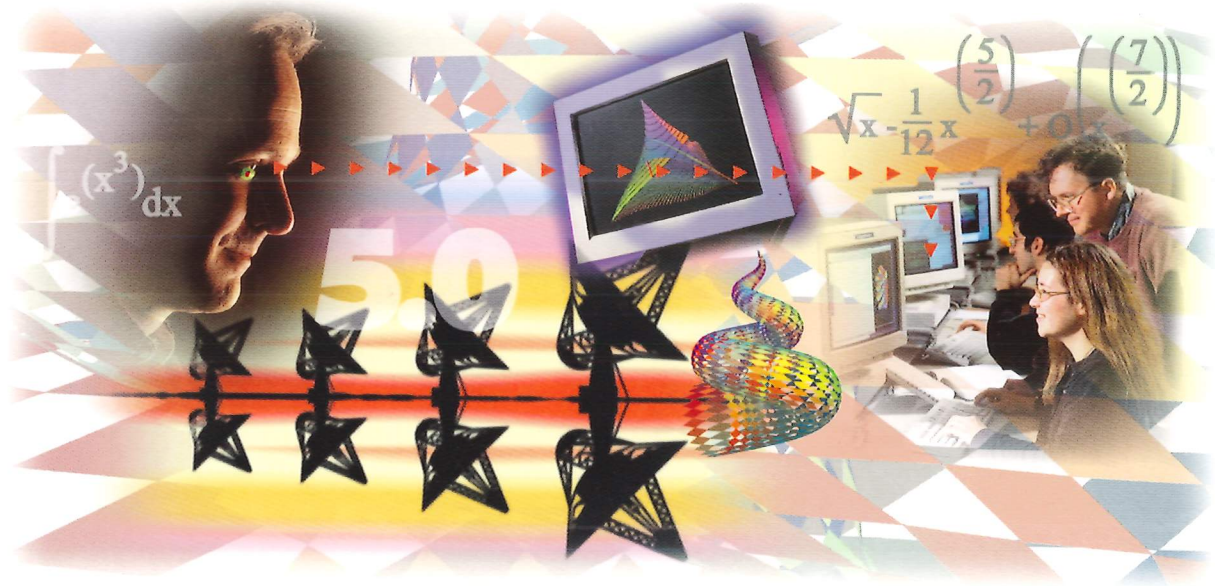
- **E-mail:** For Orders: orders@springer-ny.com,
For Info: custserv@springer-ny.com
- **Visit:** Your local technical bookstore

VISIT THE SPRINGER WEBSITE...

Springer America (<http://www.springer-ny.com>)
Springer Europe (<http://www.springer.de>)
Telos (<http://www.telospub.com>)

▼

ANNOUNCING The *New* Maple V RELEASE 5.0



WHAT'S NEW IN RELEASE 5 ...

The intuitive graphical interface in Release 5 makes Maple V the most flexible and easy-to-use mathematical package. The new features allow you to create sophisticated text and online documents. Solve an even wider class of problems using Maple V Release 5 with more mathematical functionality than ever before! Some of the mathematical improvements include integral transforms, partial differential equations, Gröebner bases, ORE algebra and code generation.

- Plotting Improvements:
3-D Geometry, VRML
Generation, Real-Time
Rotation
- Spreadsheet Functionality
with the Power of Maple V
- Point and Click palettes
- Context-sensitive Menus
- Export to HTML
- "Drag & Drop" Creation of
Plots
- MATLAB™ Link for maximum
flexibility

Waterloo Maple
ADVANCING MATHEMATICS

Waterloo Maple Inc.

info@maplesoft.com www.maplesoft.com